

## MultiRake Screen – Coarse to Fine Screening



### Description:

Raketec is a low maintenance and self-cleaning equipment that suited a wide range of projects since the vertical bar spacing are from 1mm to 50mm. This easy retrofit equipment has a simple and cost effective technology.

### Operating Mode:

Raketec consists of rubber rakes and brushes that are bolted on a pair of heavy-duty drive chains. These chains are easy to adjust thanks to the snap hook. The Raketec continuous cycle improves flow capacity up to 15mgd. Raketec has an inclination of 60° and can be installed in channels up to 10 meters deep.

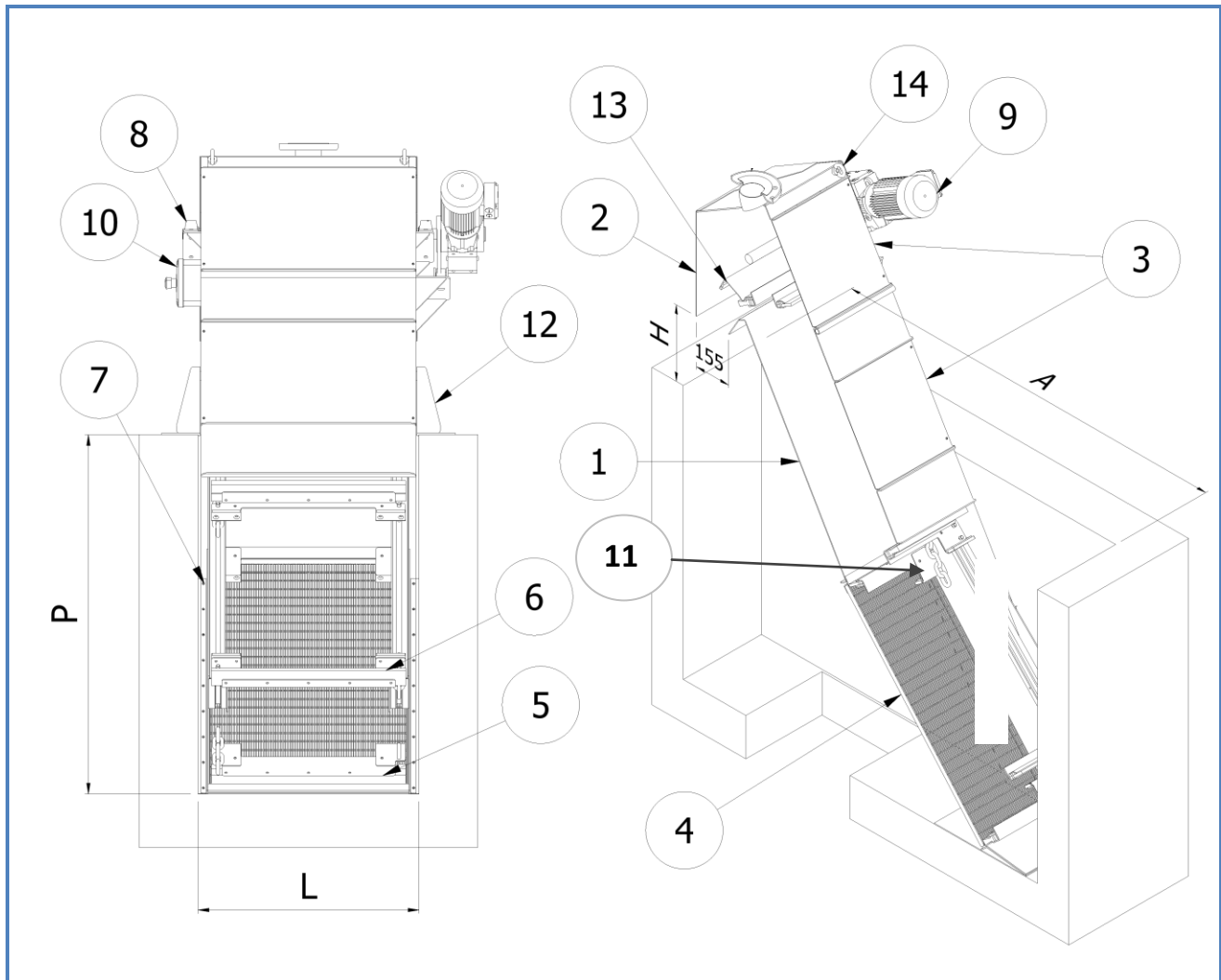
### Specifications:

- Screen openings: 1 to 50mm (3/64" to 2")
- Flow: up to 15mgd (3,000m<sup>3</sup>/h)
- Height: up to 4' (1.2m)
- Width: 1' to 6'6" (300mm to 2000mm)

### BENEFITS

- Large flow capacity
- Self-cleaning
- High screenings discharge capacity
- Easy maintenance
- Easy chain adjustability

## MultiRake Screen – Coarse to Fine Screening



### RAKETEC DESIGN :

- |                           |                          |                          |
|---------------------------|--------------------------|--------------------------|
| 1 - Stainless Steel Frame | 6 – Scrape for cleaning  | 11 – Chain               |
| 2 – Screenings' Exit      | 7 – Waterproofness Flask | 12 – Binding Support     |
| 3 – Hoods                 | 8 – Stages               | 13 – Screenings ejection |
| 4 – Screen                | 9 – Gearmotor            | 14 – Lifting' rings      |
| 5 – Brushes-Rake          | 10 – Panel Control       | 15 – Binding Support     |